



TEACHER ALERT

Feb'24

“I hope that in this year to come, you make mistakes. Because if you are making mistakes, then you are making new things, trying new things, learning, living, pushing yourself, changing yourself, changing your world. You're doing things you've never done before, and more importantly, you're doing something.”

– Neil Gaiman

WELCOME BACK!

Schools are back but we know most of you have been busy working away these last few weeks but if you've had a long, luxurious holiday enjoying the sun, GREAT!

The last month has been a blur for our National Office team. In early January we came together to review our processes and ways of working in 2023 and plan for a productive and fulfilling 2024!

National Office and our trustees were very privileged to participate in a two day cultural capability workshop hosted by the incredible Mischellé Tohu and Manawanui Mihaere from Tohu Ora. This was an exciting opportunity for our team to review our

existing vision and practices to ensure we meet the needs of all community groups in *Aotearoa* with compassion and understanding.

We were also delighted to host our Speech NZ examiners for the first time in five years in Pōneke! It was an intensive day of reviewing examination processes and our exciting new syllabi. What a joy to see the passion, dedication and commitment from such a wonderful group of educators that only want the best outcomes for students in the exam room.

We also officially said farewell to two beloved members of our team; Pam Logan and Melda Townsley. Suffice to say. SNZ would not be the organisation it is today without them! We wish them all the best.



TEACHER ALERT

Feb'24



Deputy Chair, Karen Austin farewelling Pam and Melda at our accreditation day in Wellington

IT'S OUR BIRTHDAY!

2024 marks Speech New Zealand's 60th year as leaders in oral communication education and assessment in *Aotearoa* New Zealand. We're claiming this whole year as our birthday year!

If you want to give us a present, send us your success stories. They can be personal or professional, about your practice, feedback you've received or amazing student achievement.

Get in touch:

kelly.gilbride@speechnz.co.nz

FAREWELLING JAMIE

In March we farewell our fantastic exam administrator Jamie Winter as she embarks on exciting next steps! We have loved our time with Jamie and wish her all the best for the future.

And our very own Kim Penman will be taking over Jamie's role, as well as continuing with her current position and responsibilities. We are so lucky to have Kim's extensive knowledge of SNZ processes, dedication and work ethic extending into such a crucial role.

TEACHER RESOURCES

REMINDERS FROM KAREN AUSTIN

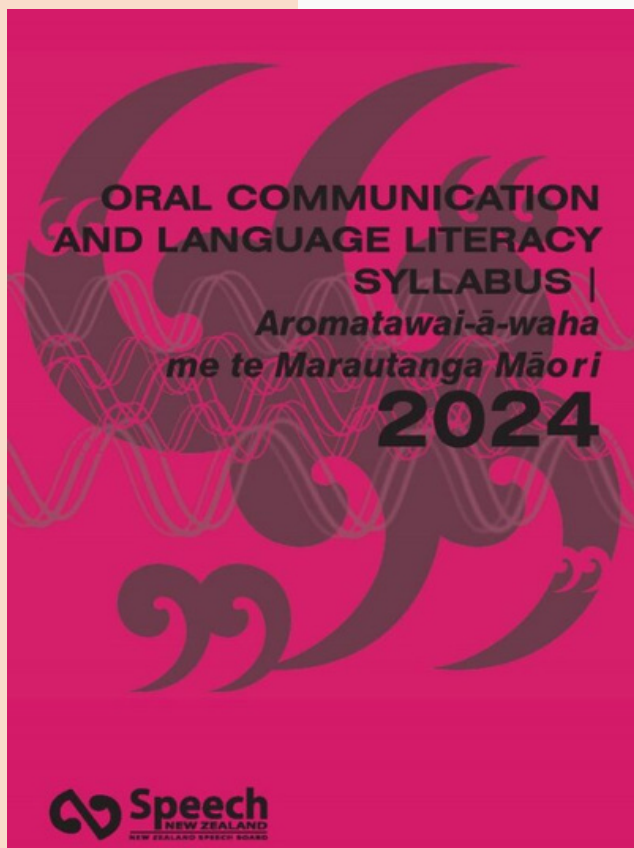


Feb'24

WELCOME BACK

Welcome teachers to 2024.

We are excited with the launch of two revised syllabi - Oral Communication and Language Literacy Syllabus | *Aromatawai-ā-waha me te Marautanga Reo* and English Language Learners and look forward to working with these throughout the year. Both syllabi contain detailed overviews and learning progressions. Below we have highlighted some relevant points.



Aromatawai-ā-waha me te Marautanga Reo

Many of you attended the online workshops that were run alongside the launch of the revised Oral Communication Syllabus..

Important points to remember:

- This syllabus is modelled on the Flexi Speaking and Performing Syllabus so teachers and students can choose the tasks that are relevant to them.
- There are only two tasks at Phase One | Tahi (Years 0, 1, 2, 3)
- There are three tasks at Phase Two | Rua (Years 4, 5, 6)
- There are three tasks at Phase Three | Toru (Years 7, 8)
- The grading results have changed. They are now Not Achieved, Pass, Credit, Merit and Honours. These grades now align with our other syllabi.

NEW SYLLABUS SUPPORT

Jessica Rees is offering free 1:1 support to teachers looking for support to transition and understand the requirements of this new syllabus. You can contact her direct to arrange a time to chat:

jessicasuerees@gmail.com

TEACHER RESOURCES

REMINDERS FROM KAREN AUSTIN



Feb'24

ENGLISH LANGUAGE LEARNERS

New syllabus alert! Our team have been working very hard to produce and deliver a new syllabus for individuals who have English as a second language. It's for all ages - from primary school right through to adulthood - and can be taught anywhere - schools, learning or community centres. Flexi options are also available.

You can view an online copy via our [website](#).

English Language Learners' Syllabus (ELL)

The syllabus has six levels.

Introductory. Two tasks chosen from six options.

Foundation. Three tasks chosen from six options.

Elementary. Four tasks chosen from eight options.

Intermediate. Five tasks chosen from thirteen options.

Senior. Five tasks chosen from sixteen options.

Advanced Senior. Six tasks chosen from sixteen options.

Results High Excellence

Excellence

High Merit

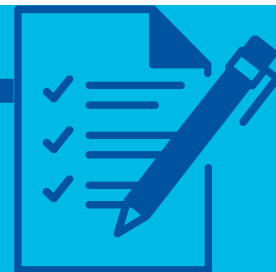
Merit

Achieved

Not Achieved



TEACHER RESOURCES



Feb'24

Little Did You Know: Advice for a Sole Trader

IKIGAI

When a new year rolls around, we all set new goals and resolutions, but what about making sure you are finding and nurturing your ikigai?

Ikigai is a Japanese concept that means your sense of purpose or sense of being - in short, the reason you get out of bed each day. There are four elements to your ikigai, and when all four are in balance, it is believed you've found your dream career and are living a meaningful and fulfilled life!

- What you love
- What you're good at
- What you can be paid for
- What the world needs

So this year, why not focus on regularly checking in with yourself and your ikigai and make sure you are living and working towards a life that is meaningful to you.

Read on: [What's your Ikigai?](#)

E-INVOICING

We live in a rapidly changing digital landscape and it's important that businesses, small or large, are informed about new risks and opportunities.



"eInvoicing is the secure, digital exchange of invoice information between suppliers' and buyers' accounting systems. This means no more PDFs, email, paper, and manual data entry; removing associated risks like PDF file attachments being intercepted and tampered with."

[Read more on eInvoicing](#) and the risks it prevents.

Want to know how you can set up e-invoicing? Look into [Hnry](#) or [read more here.](#)

TEACHER RESOURCES



Feb'24

Little Did You Know: Advice for a Sole Trader

CLAIMING EXPENSES

Last year in this newsletter we included some information on claiming expenses. Test your knowledge with this online quiz - who knows, you may discover items you had no idea you could claim for!

[Take the quiz here.](#)

BE A SMART BUSINESS

Seeking a bit of light reading for these summery weekends? Check out IRD's hearty guide to running an effective and efficient business.

It covers everything from getting started, bookkeeping, everything to do with tax, claiming expenses, GST, employer responsibilities.

Even if you've been running a successful business for years, we recommend making sure your up-to-date with any changes!

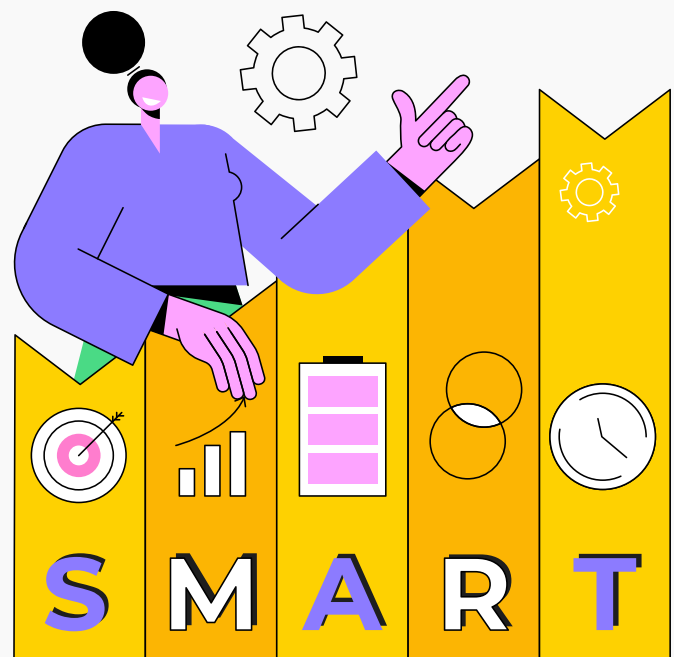
We know some of this stuff can be really overwhelming, especially if you're just starting out...But as the saying goes, there is only one way to eat an elephant. One bite at a time...

Read the smart business guide [here](#).

REJECTION

Life, and business, is full of rejection and failure but our real triumphs come from getting up and trying again. A successful person doesn't run from rejection, they embrace it and find the opportunity within. Harder said than done! But the things we lose from failure and rejection are far greater than the things we lose if we let fear get in the way of even trying.

[In this inspiring Ted Talk](#), Jia Jang talks about his 100 days of seeking rejection and turning it around into opportunities. Maybe 2024 is your year of failure and rejection and if so - lucky you!



TEACHER RESOURCES



Feb'24

FUTURE TEACHER COACHING

Are you finding our sole trader advice helpful? Do you wish you had a mentor to offer you more advice and support?

Our successful Future Teacher Coaching programme continues in 2024 for new teachers, seeking support in starting a new business and established teachers seeking refresher courses or to upskill in a new area!

Start the new year strong with a toolkit of knowledge that will make your business unstoppable! Visit our [website](#) for more information.

DEIRDRE SNEDDEN SCHOLARSHIPS

The Deirdre Snedden Scholarship returns in 2024 to support teachers in their professional development endeavours. The scholarship supports drama and/or communication teachers to travel overseas and participate in a course or programme of their choosing. It's a fantastic opportunity that has benefitted many teachers throughout the years.

For more information on the scholarship and to apply, email: owen.donnaj@xtra.co.nz

NEED A SYLLABUS?

Let us know if you'd like a hard copy syllabus! We'll post them out to you - free of charge. To request copies email: info@speechnz.co.nz

MEET THE TEACHER

This year we want to celebrate and promote our teachers to the wider community! If you want to be included in our upcoming social media campaign to promote yourself or business, get in touch and we'll send you some fun, short questions! kelly.gilbride@speechnz.co.nz



TEACHER RESOURCES



Feb'24

STORYTELLING RESOURCE

Why is the skill of storytelling so important and as teachers how do we inspire and facilitate?

Our new Storytelling resource for teachers begins to unpack these questions by breaking down the elements of a good story and techniques for implementing them at different grades and for groups. Packed full of games, exercises, provocations, planning sheets and an assessment rubric.

Head to our website to view a sample and buy online.



1:1 VERSUS GROUPS

We have such a variety of teachers working in different spaces. Some of you teach in groups, some one-on-one and some a mix of both! With all the different syllabi we offer, its important to remember which are best suited to groups or individuals.

Our new [Oral Communications Aromatawai-ā-waha me te Marautanga Reo](#) syllabus is specifically suited for large groups. Smaller groups and individuals will get the best developments from our [Speech & Drama](#), [Public Speaking and Communication](#) and [Flexi Speaking and Performing](#) syllabi.

WHY EXAMS?

Assessments are a crucial part of the Speech New Zealand learning process. It's an opportunity for students to really test their learning and receive constructive feedback for improvement. Overcoming the nerves and putting together all the elements of their learning is a huge milestone for students! Students are able to move from one grade to the next, a clear roadmap of their progress, and written reports, badges and certificates all recognise achievement

TEACHER RESOURCES



Feb'24

TEACHER DASHBOARD

Need help navigating the teacher dashboard? We have step-by-step video guides on our YouTube channel.

You can watch the tutorials [here](#).

BADGES

Please order badges on the entry form, so both the exam fee and badge fee can be invoiced together. This also enables us to post badges to you at the same time as certificates. Separate badges will incur postage fees and likely have a 4-6 wait time.



EXAM SCHEDULES

Make sure to diarise the closing date for exam entry submissions happening in your area throughout the year. While we post reminders on our social media, you can also access the schedule via our [website](#).

TRANSLATION AMENDMENTS

The use of te reo Māori is a journey for Speech New Zealand and we have recently been advised some of our translations in the Oral Communication and Language Literacy | *Aromatawai-ā-waha me te Maruatanga Reo* need to be amended. Please find the glossary of terms below.

We have also updated our syllabus on the website and highlighted the amendments online.

Aromatawai-a-waha me te Maruatanga Reo	Oral Communication and Language Literacy Syllabus
Ngā kai o te pukapuka	Contents
Kai mate ururoa	Progress outcomes
Kōrero Ōpaki	Social Speech
Rurī	Poem



BE PART OF A TEAM

Feb'24

EPC (EDUCATORS IN PERFORMANCE & COMMUNICATION)

Looking to grow your community this year? Seeking professional development opportunities, ways to expand your business and access to free resources that will enhance your teaching?

Join EPC, a community of teachers across Aotearoa New Zealand! Teachers come from all backgrounds, ages, levels and practices.

Do I need to teach Speech New Zealand to join EPC?

No! Any teachers/educators can join - no matter what they teach - Trinity, SNZ, NCEA. We are all united by our love of education.

What are the benefits of joining?

- **Community**

You will connect with other like-minded individuals! In this community, you can ask questions, share resources and even plan events in your area with other teachers nearby. Creativity doesn't happen in a vacuum and community is essential for growth, personal and professional

development and it's just great knowing other people have your back!

- **Resources**

Access to free resources on teaching, running your own business and more!

- **Workshops**

Discounts to creative and professional development workshops. EPC regularly host online workshops and webinars hosted by award-winning creatives and educators. If you have an idea for a workshop or would love a special guest speaker, please let us know.

Email: info@epc.org.nz

Can I join from anywhere?

Yes! All of our meetings and workshops are held online.

Visit www.epc.orgn.nz for more information or to [register](#).

If you are already a member, a reminder that subscriptions are due to be renewed in April!



GENERAL INFORMATION

2024

WHO DO I CONTACT?

If you have any questions or exciting news, we would love to hear from you!



Tour related questions
(both Claire and Jaime)

examadmin@speechnz.co.nz

Theory, certificates and badges

kim.penman@speechnz.co.nz

Success Stories or media opps

kelly.gilbride@speechnz.co.nz

Complaints / concerns for
management (Helena)

manager@speechnz.co.nz

General enquiries info@speechnz.co.nz

FOLLOW US!



We're on social media! Make sure to follow us and stay up to date with regular Speech NZ news and events.

[Facebook](#) | [Instagram](#) plus, did you know we have a [private page](#) just for Speech NZ teachers? Join today and connect with your fellow educators.

NATIONAL OFFICE HOURS

Monday - Friday
9:30am - 2:30pm

Helena Coulton - Executive Manager
Mon - Fri | 9.00am - 2.30pm

Kim Penman - Office & Exam
Administrator

Mon | Wed | 8.30am - 4.30pm
Tue | Thu | 9.30am - 2.30pm

Claire Tanner - Exam Administrator
Mon | Fri | 11am - 3pm | Tue | Wed |
8.30am - 4.30pm

Kelly Gilbride - Marketing &
Sponsorship Coordinator

Mon | Wed | 8.30am - 5.00pm | Fri |
8.00am - 11.30am

Katie Jackson - Office & Accounts
Administrator

Mon - Fri | 9.30am - 2pm